

IN TWO SHEETS-SHEET TWO

PLAT OF

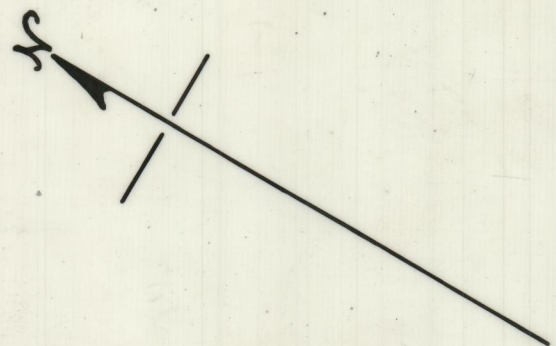
GREENE STREET

FROM BROAD ST. TO WESTMINSTER ST.

CITY COUNCIL

OCTOBER 5, 1970 SCALE: 1"=40'

PROVIDENCE, R. I.
 P. W. DEPT. - ENGINEERING OFFICE
 STREET LINE SECTION
 Plan No 063475
 Date May 21, 1971



WESTMINSTER STREET

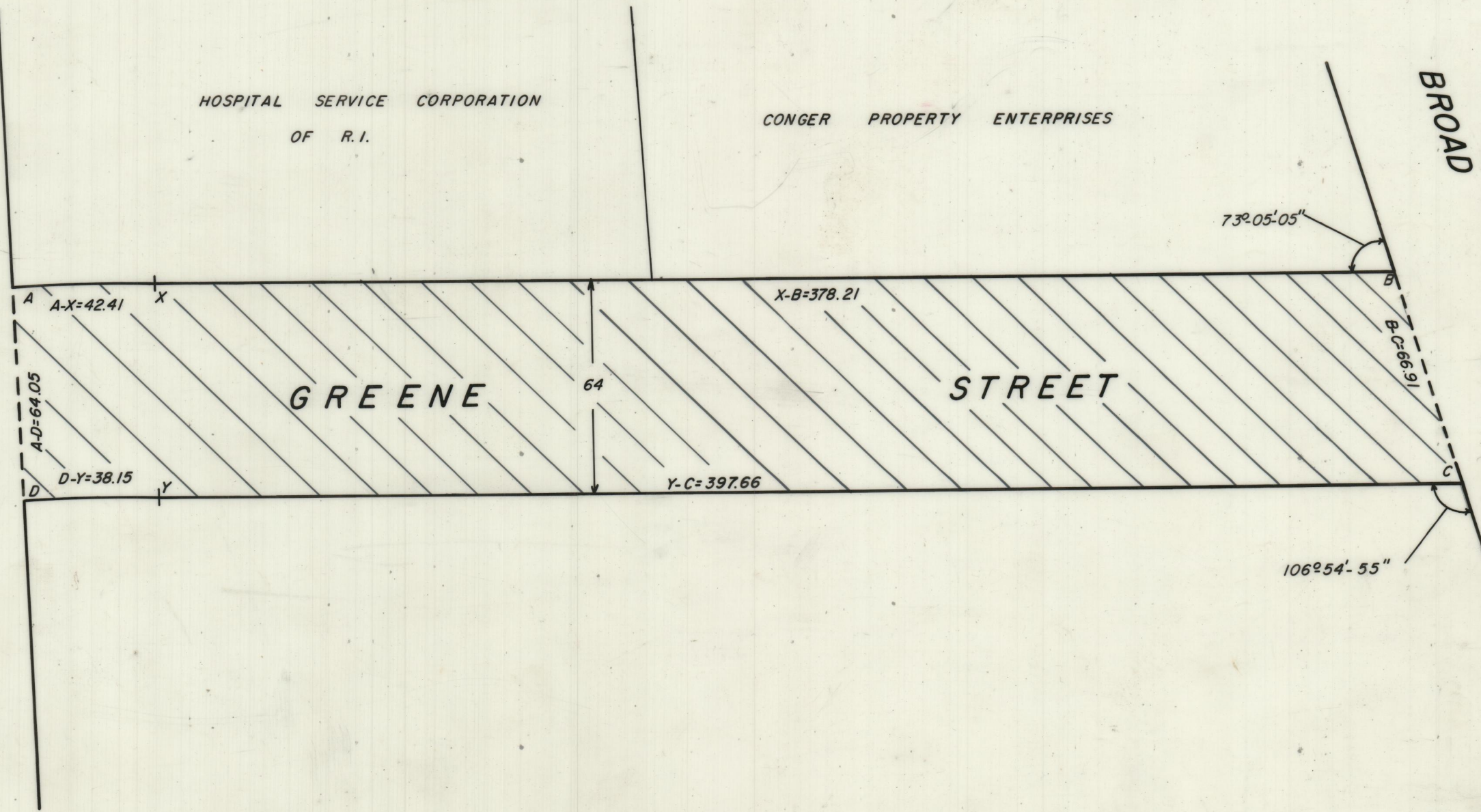
HOSPITAL SERVICE CORPORATION
OF R. I.

CONGER PROPERTY ENTERPRISES

BROAD STREET

STREET

STREET



OFFICE NO. 27306
 DRAWER 89
 SHEET B-4

CITY COUNCIL RESOLUTION NO. 371